



Model:

LT400

4G LTE N300 Wi-Fi Router

- ✔ 4G LTE FDD & TDD
- ✔ 150Mbps LTE + 300Mbps Wi-Fi
- 🔒 PPTP/L2TP VPN Client
- 🧠 Qualcomm Chipset Inside



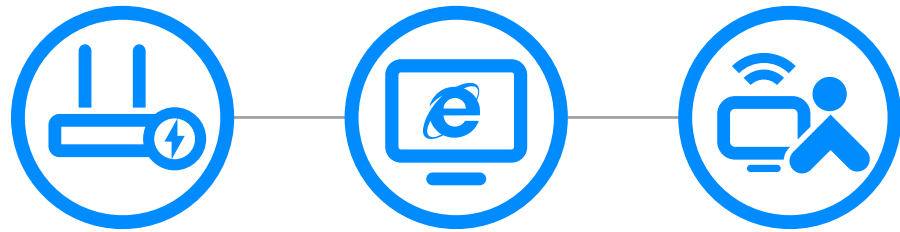


Enjoy Blazing Fast 4G LTE Network

Enjoy Blazing Fast 4G LTE and Wi-Fi Speed. LT400 uses the latest generation 4G LTE technology to reach speeds of up to 150Mbps in download and 50Mbps in upload. It also allows you to connect via Wi-Fi with a maximum speed of 300Mbps on 2.4GHz to enjoy gaming, streaming, and much more.

Get Wi-Fi Where You Need It

Tested in the field for years to ensure universal compatibility with 4 advanced antennas to deliver a smooth connection. Simply plug in a SIM card and power on this elegant piece of technology to utilize fast and stable Wi-Fi, whether you're at home or working remote.



Plug and Play

With an integrated 4G LTE modem and a built-in SIM card slot, all you need to do is insert a micro SIM card and turn on the router. Enjoying fast, stable Wi-Fi on a 4G LTE network has never been easier.

Flexible WAN/LAN Port

The WAN/LAN port can be configured as a WAN or LAN port. When working on LAN mode, LT400 is just a normal 4G LTE router. While working on WAN mode, LT400 can maintain 4G and WAN connections at the same time, and provide Internet preferentially from wired ports to reduce 4G mobile data tariffs.



Interface

- 1 x 10/100Mbps WAN/LAN Port
- 3 x 10/100Mbps LAN Ports
- 1 x USB Port
- 1 x Power Jack
- 1 x SIM Card Slot

LED Indicators

- 4G
- WiFi
- LAN1~LAN3
- WAN/LAN
- INTERNET
- Power

Software



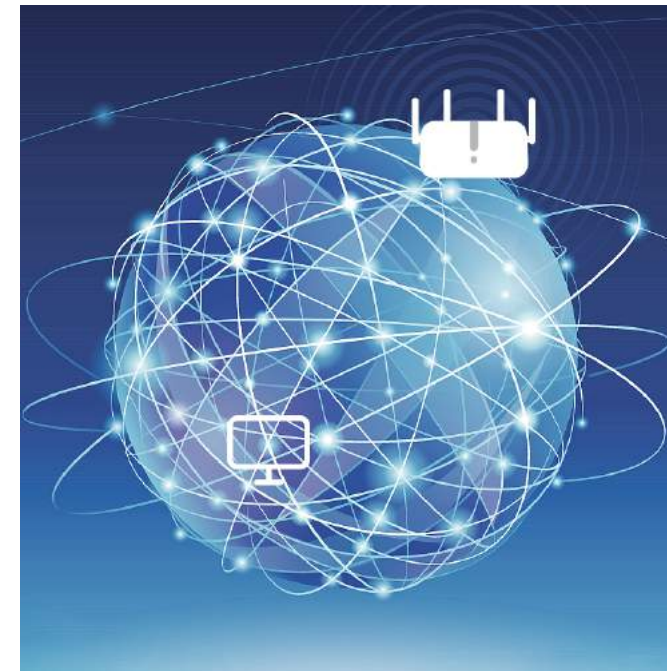
FDD+TDD

Support FDD and TDD, meet the needs of various ISPs and provide a good user experience for customers. Support most cellular operators around the world.



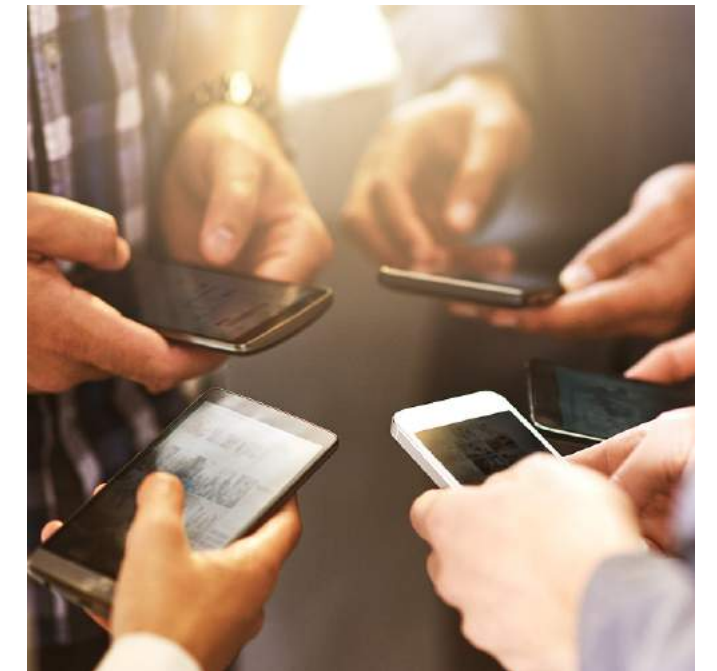
VPN Client

With built-in VPN client, this router can easily establish a connection to VPN Server to transport all your online data and traffic, securing it with its encryption at the same time.



DDNS

By assigning a custom domain name to your home router's IP address, DDNS function will update automatically as your home IP continues to change. Compatible with 15 more DDNS providers.



Guest Network

Guest Network separate guest access from your family network. Maintain high security across your network to help ensure your privacy is safe while online.



Specifications

- Up to 150Mbps / 50Mbps LTE speed
- Up to 300 Mbps WiFi speed
- Support PPTP/L2TP VPN client for security connections
- Support 20+ DDNS for remote management
- USB port for easy storage and sharing
- 4G watchdog can automatically redial when disconnected
- WiFi schedule supports configuration of available WiFi time
- Flexible WAN/LAN port for dual connectivity

Hardware Specification

CPU	MTK Chipset for Wi-Fi and Qualcomm Chipset for 4G
DRAM/FLASH	64MB DDR2 / 8M SPI Flash
Interface	3x RJ45 10M/100M LAN Ethernet interfaces
	1 x RJ45 10M/100M LAN/WAN Ethernet interfaces
	1 x Reset
	1 x USB2.0
	1 x SIM (Standard)
Antenna	2.4G (802.11N): 2T2R 4G: 2T2R

Gain	5dBi
Frequency	2.4-2.4835GHZ
LED	PWR、WIFI、4G、LAN1-LAN3、WAN/LAN
Transmit Power	11b: 1/2/5.5/11Mbps
	11g: 6/9/12/18/24/36/48/54Mbps
	11n: 300Mbps (MAX)
Spread-spectrum technique	DSSS
Data Encryption	WPA-PSK/WPA2-PSK、WPA/WPA2
Modulation type	11b: CCK、QPSK、BPSK
	11g: OFDM
	11n: QPSK, BPSK, 16-QAM, 64-QAM
Media access protocol	CAMA/CA with ACK
RF Power	11b: 18dBm@MC0-7
	11g: 17dBm@6-54Mbps
	11n: 16dBm@6-54Mbps
Frequency Bands	LTE-FDD: B1/B3/B7/B8/B20/B28A
	LTE-TDD: B38/B40/B41
	WCDMA: B1/B8
	GSM/EDGE: B3/B8



Software Features

Management	Parental Control
	Guest Network
DHCP	Server, DHCP Client List, Address Reservation
Dynamic DNS	Compatible with 20 more DDNS providers.
NAT	Port Forwarding, Port Triggering, UPnP, DMZ
VPN Client	PPTP/L2TP

Wireless Features

Wireless Standards	IEEE 802.11n/b/g 2.4 GHz
Frequency	2.4 GHz
Signal Rate	300 Mbps (2.4 GHz)
	Compatible with 802.11a/b/g/n Wi-Fi standards
Transmit Power	CE: <20dBm
Wireless Modes	FCC:<30dBm
	Enable/Disable Wireless Radio, WMM
Wireless Functions	WEP, WPA/WPA2, WPA-PSK/WPA2-PSK

Others

Package	4G LTE WiFi Router
Contents	Power Adapter
	RJ45 Ethernet Cable
	Quick Installation Guide
	SIM Card Adapter
System Requirements	Microsoft Windows 98SE/NT/2000/XP/Vista™/7/8/8.1/10, MAC OS, NetWare, UNIX or Linux
	Internet Explorer 11, Firefox 12.0, Chrome 20.0, Safari 4.0, or other Java-enabled browser
	Subscription with an internet service provider (for internet access)