

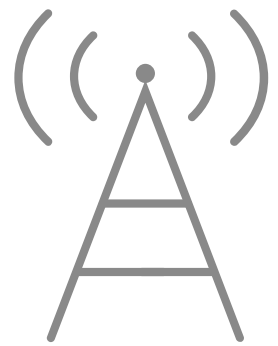


Model:

# LT500

4G LTE AC1200 Dual Band  
Wi-Fi Router

- ✓ 4G LTE FDD & TDD
- ✓ AC1200 Dual Band Wi-Fi
- 🌐 PPTP/L2TP VPN Client
- 🧠 Qualcomm Chipset Inside



← 50Mbps

**4G LTE**

→ 150Mbps



**867Mbps**  
5GHz

**300Mbps**  
2.4GHz

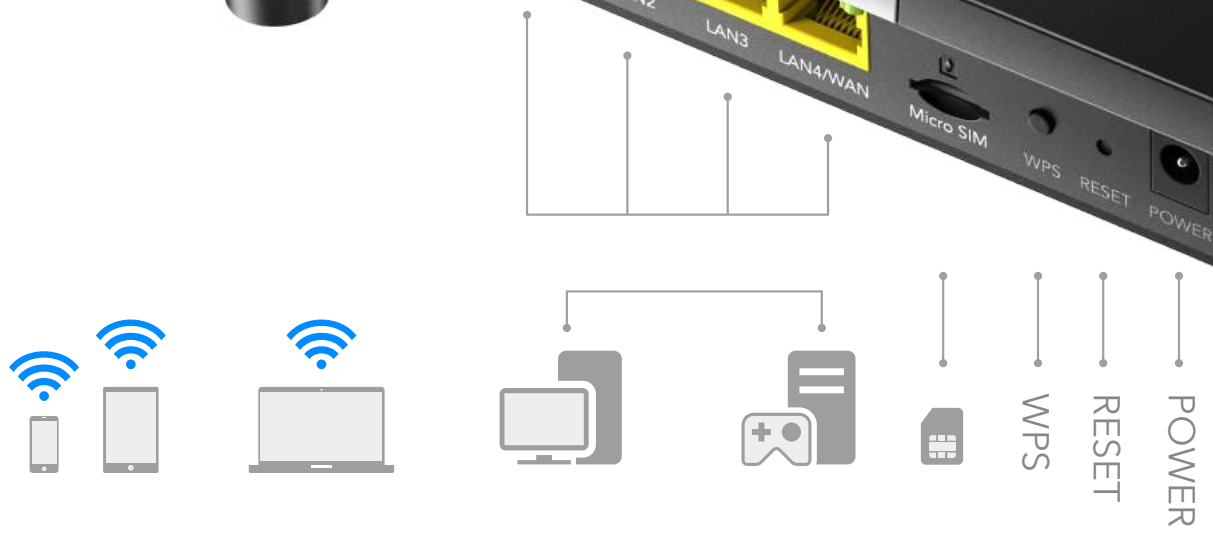


## Enjoy Blazing Fast 4G LTE Network

Enjoy Blazing Fast 4G LTE and Wi-Fi Speed. LT500 uses the latest generation 4G LTE technology to reach speeds of up to 150Mbps in download and 50Mbps in upload. It also allows you to connect via Wi-Fi with a maximum speed of 867Mbps on 5GHz and 300Mbps on 2.4GHz to enjoy gaming, streaming, and much more.

## Get Wi-Fi Where You Need It

Tested in the field for years to ensure universal compatibility with 4 advanced antennas to deliver a smooth connection. Simply plug in a SIM card and power on this elegant piece of technology to utilize fast and stable Wi-Fi, whether you're at home or working remote.



## Plug and Play

With an integrated 4G LTE modem and a built-in SIM card slot, all you need to do is insert a micro SIM card and turn on the router. Enjoying fast, stable Wi-Fi on a 4G LTE network has never been easier.

## Flexible WAN/LAN Port

The WAN/LAN port can be configured as a WAN or LAN port. When working on LAN mode, LT500 is just a normal 4G LTE router. While working on WAN mode, LT500 can maintain 4G and WAN connections at the same time, and provide Internet preferentially from wired ports to reduce 4G mobile data tariffs.

## Interface

- 1 x 10/100Mbps WAN/LAN Port
- 3 x 10/100Mbps LAN Ports
- 1 x Power Jack
- 1 x SIM Card Slot

## LED Indicators

- System LED On Front Panel
- RJ45 LED On Each Port

## Software



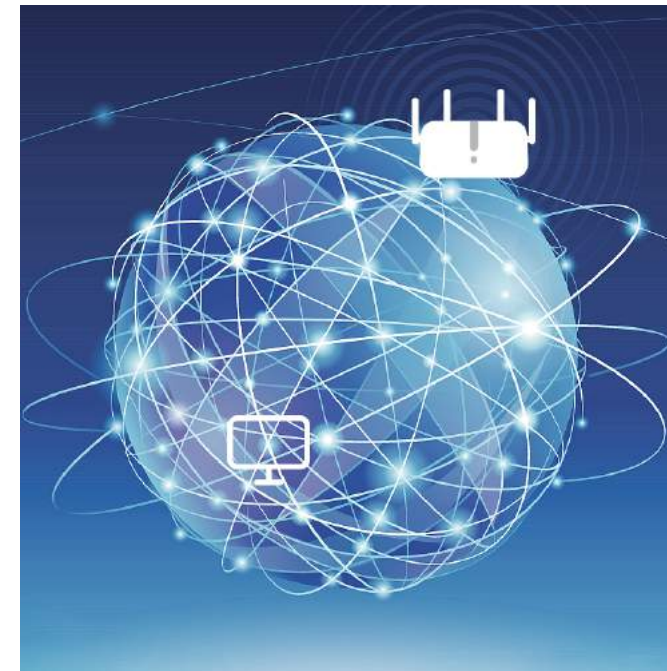
### FDD+TDD

Support FDD and TDD, meet the needs of various ISPs and provide a good user experience for customers. Support most cellular operators around the world.



### VPN Client

With built-in VPN client, this router can easily establish a connection to VPN Server to transport all your online data and traffic, securing it with its encryption at the same time.



### DDNS

By assigning a custom domain name to your home router's IP address, DDNS function will update automatically as your home IP continues to change. Compatible with 15 more DDNS providers.



### Guest Network

Guest Network separate guest access from your family network. Maintain high security across your network to help ensure your privacy is safe while online.



# Specifications

- Up to 150Mbps / 50Mbps LTE speed
- Up to 867Mbps on 5GHz + 300 Mbps on 2.4GHz WiFi speed
- Support PPTP/L2TP VPN client for security connections
- Support 20+ DDNS for remote management
- 4G watchdog can automatically redial when disconnected
- WiFi schedule supports configuration of available WiFi time
- Flexible WAN/LAN port for dual connectivity

# Hardware Specification

CPU	MTK Chipset for Wi-Fi and Qualcomm Chipset for 4G
DRAM/FLASH	64MB DDR2 / 8M SPI Flash
Interface	3x RJ45 10M/100M LAN Ethernet interfaces
	1 x RJ45 10M/100M LAN/WAN Ethernet interfaces
	1 x Reset Button
	1 x WPS Button
	1 x SIM Slot (Micro)
Antenna	2 * WiFi Antannas and 2 * LTE Antannas

Gain	5dBi
Wi-Fi Frequency	2.4GHZ, 5GHz
LTE Frequency Bands	LTE-FDD: B1/B3/B7/B8/B20/B28A
	LTE-TDD: B38/B40/B41
	WCDMA: B1/B8
	GSM/EDGE: B3/B8

# Wireless Features

Wireless Standards	IEEE 802.11ac/a/n/b/g
Frequency	2.4 GHz、 5GHz
Signal Rate	867Mbps (5GHz), 300 Mbps (2.4 GHz) Compatible with 802.11ac/a/b/g/n Wi-Fi standards
Transmit Power	CE: <20dBm FCC:<30dBm
Wireless Modes	Enable/Disable Wireless Radio, WMM
Wireless Functions	WEP, WPA/WPA2, WPA-PSK/WPA2-PSK



## Software Features

Management	Parental Control
	Guest Network
DHCP	Server, DHCP Client List, Address Reservation
Dynamic DNS	Compatible with 20 more DDNS providers.
NAT	Port Forwarding, Port Triggering, UPnP, DMZ
VPN Client	PPTP/L2TP

## Others

Package	4G LTE WiFi Router
Contents	Power Adapter
	RJ45 Ethernet Cable
	Quick Installation Guide
	SIM Card Adapter
System Requirements	Microsoft Windows 98SE/NT/2000/XP/Vista™/7/8/8.1/10, MAC OS, NetWare, UNIX or Linux
	Internet Explorer 11, Firefox 12.0, Chrome 20.0, Safari 4.0, or other Java-enabled browser
	Subscription with an internet service provider (for internet access)