

Model: LT350

4G LTE

N300 Wi-Fi Router

- ✓ 4G LTE FDD & TDD
- 📶 150Mbps LTE + 300Mbps Wi-Fi
- 🌐 VPN Support





Enjoy Blazing Fast 4G LTE Network

Enjoy Blazing Fast 4G LTE and Wi-Fi Speed. LT350 uses the latest generation 4G LTE technology to reach speeds of up to 150Mbps in download and 50Mbps in upload. It also allows you to connect via Wi-Fi with a maximum speed of 300Mbps on 2.4GHz to enjoy gaming, streaming and much more.

Get Wi-Fi Where You Need It

Tested in the field for years to ensure universal compatibility with 4 advanced antennas to deliver a smooth connection. Simply plug in a SIM card and power on this elegant piece of technology to utilize fast and stable Wi-Fi, whether you're at home or working remote.

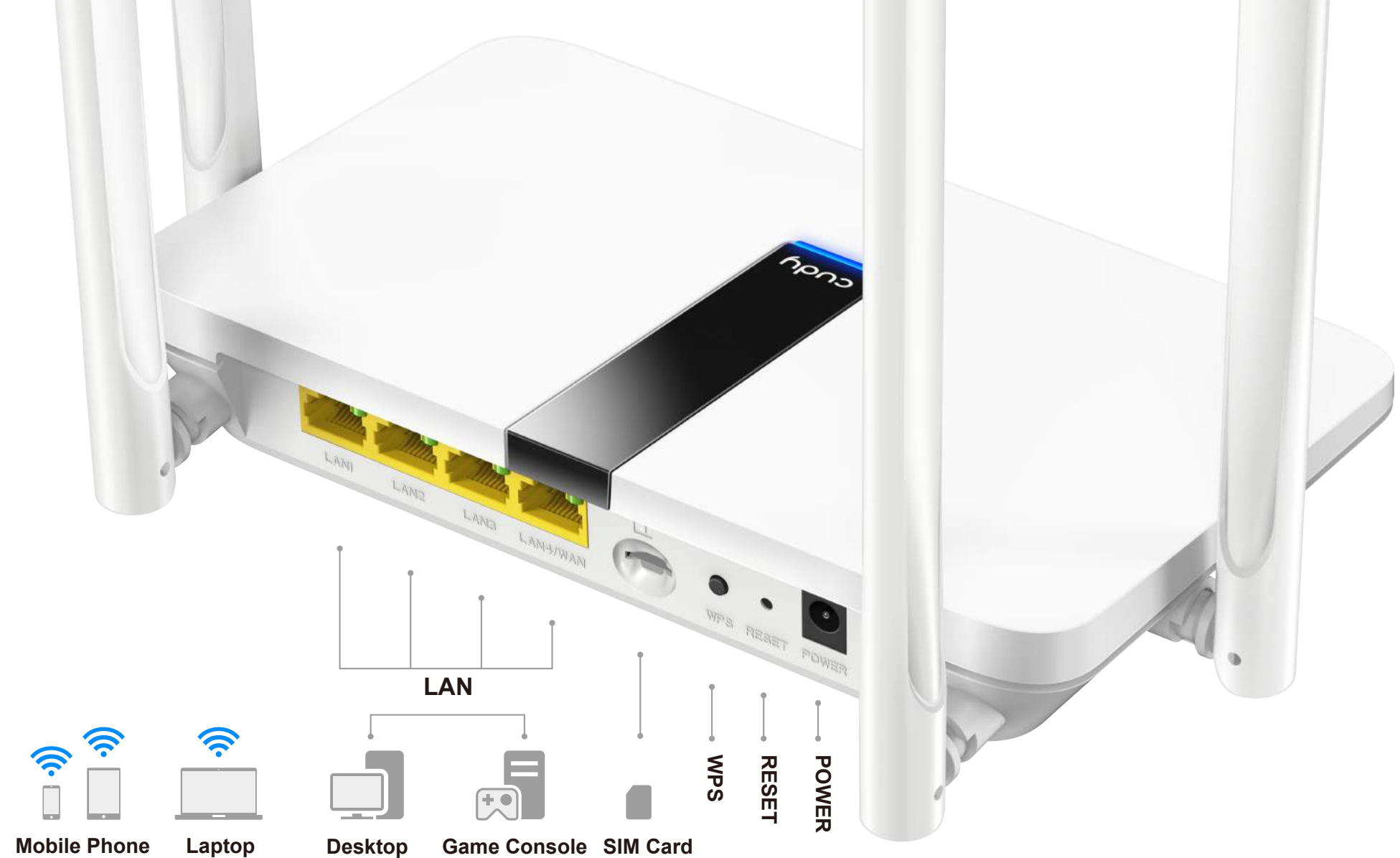


Plug and Play

With an integrated 4G LTE modem and a built-in SIM card slot, all you need to do is insert a nano SIM card and turn on the router. Enjoying fast, stable Wi-Fi on a 4G LTE network has never been easier.

Flexible WAN/LAN Port

The WAN/LAN port can be configured as a WAN or LAN port. When working on LAN mode, LT350 is just a normal 4G LTE router. While working on WAN mode, LT350 can maintain 4G and WAN connections at the same time, and provide Internet preferentially from wired ports to reduce 4G mobile data tariffs.



Interface

- 1 x 10/100Mbps WAN/LAN Port
- 3 x 10/100Mbps LAN Ports
- 1 x Power Jack
- 1 x SIM Card Slot

LED Indicators

- 4G
- WiFi
- LAN1~LAN3
- WAN/LAN
- INTERNET
- Power

Software



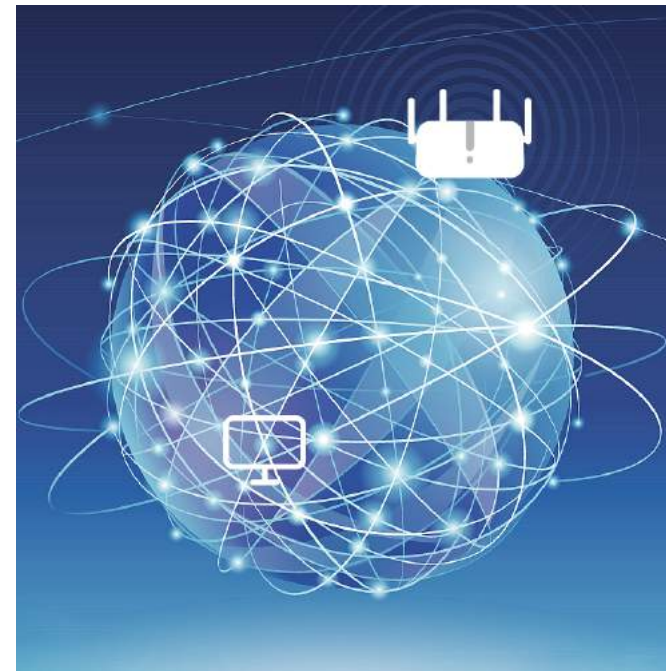
FDD+TDD

Support FDD and TDD, meet the needs of various ISPs and provide a good user experience for customers. Support most cellular operators around the world.



VPN

With built-in VPN, this router can easily establish a connection to VPN Server to transport all your online data and traffic, securing it with its encryption at the same time.



DDNS

By assigning a custom domain name to your home router's IP address, DDNS function will update automatically as your home IP continues to change. Compatible with 15 more DDNS providers.



Guest Network

Guest Network separate guest access from your family network. Maintain high security across your network to help ensure your privacy is safe while online.



Specifications

- Up to 150Mbps/50Mbps LTE speed
- Up to 300Mbps WiFi speed
- Support VPN client for security connections
- Support 15+ DDNS for remote management
- USB port for easy storage and sharing
- 4G watchdog can automatically redial when disconnected
- WiFi schedule supports configuration of available WiFi time
- Flexible WAN/LAN port for dual connectivity

Hardware Specification

| | |
|---------------------------|--|
| Chipset | MTK+Qualcomm |
| DRAM/FLASH | 512Mbit (64MB) DDR / 64Mbit (8MB) SPI Flash |
| Interface | 3x RJ45 10M/100M LAN Ethernet interfaces |
| | 1 x RJ45 10M/100M LAN/WAN Ethernet interface |
| | 1 x Reset Button |
| | 1 x Nano SIM slot |
| Antenna | 2.4G(802.11N): 2T2R 4G: 2T2R |
| Gain | 5dBi |
| Frequency | 2.4-2.4835GHZ |
| LED | PWR, WIFI, 4G, LAN1-LAN3, WAN/LAN |
| Transmit Power | 11b: 1/2/5.5/11Mbps |
| | 11g: 6/9/12/18/24/36/48/54Mbps |
| | 11n: 300Mbps (MAX) |
| Spread-spectrum technique | DSSS |
| Data Encryption | WPA-PSK/WPA2-PSK, WPA/WPA2 |
| Modulation type | 11b: CCK, QPSK, BPSK |
| | 11g: OFDM |
| | 11n: QPSK, BPSK, 16-QAM, 64-QAM |
| Media access protocol | CAMA/CA with ACK |
| LTE Frequency Bands | LTE-FDD: B2/B4/B5/B12/B13/B14/B66/ B71 |
| US Version | WCDMA: B2/B4/B5 |



Software Features

| | |
|--------------------------|--|
| WAN Type | 4G/Dynamic IP/Static IP/PPPoE |
| DHCP | Server, DHCP Client List, Address Reservation |
| Dynamic DNS | Compatible with 15 more DDNS providers. |
| NAT | Port Forwarding, Port Triggering, UPnP, DMZ |
| VPN Client | PPTP/L2TP/OpenVPN/WireGuard |
| CWMP Protocol | TR069 / TR098 / TR111 / TR181 |
| ACS Server Compatibility | GenieACS, OpenACS |
| Management | Access Control, Local Management, Remote Management, Wake on LAN |
| TTL | Extend/Spoof/Custom |
| DNS | Cloudflare/Google/NextDNS/Custom |
| Internet Protocols | IPv4 / IPv6 |
| IPv6 | Relay Dynamic(SLAAC/DHCPv6) Static (Fixed IP) Passthrough MAP-E (Dual-stack) DS-Lite (Dual-stack) |
| 4G Band Lock | Support |

Wireless Features

| | |
|--------------------|---|
| Wireless Standards | IEEE 802.11n/b/g 2.4GHz |
| Frequency | 2.4GHz |
| Signal Rate | 300 Mbps (2.4 GHz) Compatible with 802.11a/b/g/n Wi-Fi standards |
| Transmit Power | CE: <20dBm FCC:<30dBm |
| Wireless Modes | Enable/Disable Wireless Radio, WMM |
| Wireless Functions | WEP, WPA/WPA2, WPA-PSK/WPA2-PSK |

Others

| | |
|---------------------|--|
| Package | 4G LTE WiFi Router |
| Contents | Power Adapter RJ45 Ethernet Cable Quick Installation Guide |
| System Requirements | Microsoft Windows 98SE/NT/2000/XP/Vista™/7/8/8.1/10/11, MAC OS, NetWare, UNIX or Linux Internet Explorer 11, Firefox 12.0, Chrome 20.0, Safari 4.0, or other Java-enabled browser Subscription with an internet service provider (for internet access) |