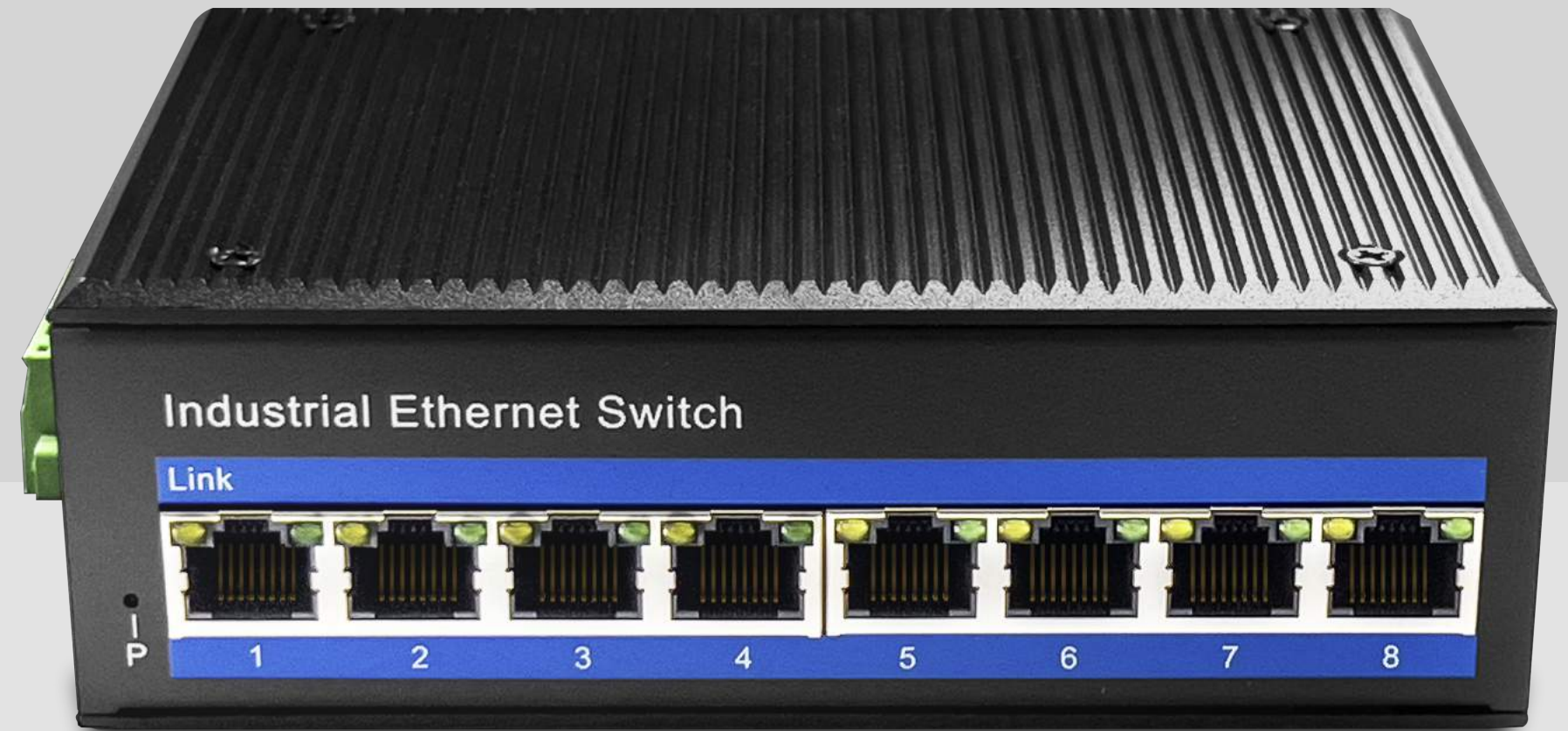


Model

IG 1008

8-Port Gigabit Industrial Switch



Datasheet

Description

IG1008 an hardened 8-port Industrial Ethernet Switch, provides non-blocking wire-speed performance in harsh industrial environment. It also provides 8-port 10/100/1000BASE-TX RJ45 copper interfaces delivered in an IP40 rugged, strong case with redundant power system. Its slim case is suitable for such applications as surveillance system deployments, control management and wireless service in climatically demanding environments with wide temperature range from -40 to 80 degree

The IG1008 series provides the flexibility to all kinds of 10/100Mbps Ethernet Media on RJ-45 port and performs highly stable fiber performance.

The IG1008 series is packaged in a compact IP40 case that allows either DIN rail or panel mounting to have efficient usage of cabinet space. It provides an integrated power supply with a wide range of voltages for worldwide operation. It also offers dual-redundant, reversible polarity 12V DC to 52V DC power supply inputs for high availability applications requiring dual or backup power inputs.

Features

- 8-port 10/100/1000Base-Tx RJ-45 with auto negotiation and auto-MDI/MDI-X function
- 12V to 52V DC, redundant power input
- -40°C to 80°C operating temperature
- IP40 aluminum housing
- Supports 6KV DC Ethernet ESD protection
- Supports 6KV DC EFT protection for power line
- Free Fall, Shock and Vibration Stability
- DIN-rail and wall-mountable hardware design



Specifications

Model No.	IG1008
10/100BASE-TX Port	8 port RJ-45 auto-MDI / MDI-X
Performance Specification	Bandwidth: 20Gbps
	Packet Buffer Memory:2Mbit
	Packet Forwarding Rate:15Mpps
	MAC Address Table: 8K
Installation	DIN rail
Maximum Frame Size	9000bytes packet size
Flow Control	Back pressure for half duplex, IEEE 802.3x pause frame for full duplex
Enclosure	IP40 aluminum housing
LED Indicator	Power: Red
	Ethernet: Yellow
Power Input	12 to 52V DC redundant power
Power Consumption	3 watts
Surge protection	±4KV
Network Protocols	IEEE802.3 10BASE-T;
	IEEE802.3i 10Base-T;
	IEEE802.3u;100Base-TX/FX;
	IEEE802.3ab 1000Base-T;
	IEEE802.3z 1000Base-X;
	IEEE802.3x;

Network cables	10BASE-T: Cat3,4,5 UTP(≤100 meter)
	100BASE-TX: Cat5 or later UTP(≤100meter)
	1000BASE-TX: Cat6 or later UTP(≤100 meter)
MTBF	>300,000hours
Dimensions (W x D x H)	143.7 x 103 x 47.7 mm
Weight	Product Weight: 0.52KG
	Packing Weight: 0.62KG
Working Environment	Working temperature: -40-80 degree
	Storage temperature: -40-80 degree
	Relative Humidity: 5%~95 %(no condensation)

Dimensions

